

# TOPSELLERS

## CONTROL SEALS AND LABELS



### Essential accessories for sampling

After taking samples from sacks or big bags by piercing the packaging material, the punctures have to be sealed again. For this purpose, the strongly adhesive close-it control seals are perfectly suitable. Simultaneously, the seals can be used to mark and label the sampled container or bag. Equally important is the clear labelling and sealing of the taken samples. This is the only way to prove unambiguously that the reference or retained sample is identical to the original sample. Safety labels serve in addition as originality seals and protect the samples from manipulations.

Thus, the diverse Bürkle control-seals and labels ensure a safe sampling procedure from the beginning to the end.

### close-it control seal | essential for sampling

Taking samples from sacks, boxes, bags, etc. with sampling lances is a common and time-proven practice. This produces holes through which easily flowing bulk goods could escape from the container. With the close-it seal, this can be prevented in an uncomplicated manner. The label has a sandwich-type structure (aluminium/ paper) and seals the container hermetically (vapour barrier). This virtually prevents hygroscopic powders from clumping together. The label is not just used to provide a hermetic seal. It is also used for providing quality control information.

close-it can be written on with ball-point pen, pencil or felt-tip marker.

The rear of the label is coated with a powerful adhesive. This means that close-it sticks firmly to most commercial containers, even to surfaces coated with fine powder, slightly moist or even frozen surfaces where conventional labels or adhesive tape will not stick.

- ▶ The labels are supplied in handy rolls
- ▶ The cross perforations allow each label to be separated from the roll individually
- ▶ close-it – standard size 95 x 95 mm
- ▶ close-it Maxi - 150 x 150 mm, for larger holes or longer tears in containers



#### Control seal close-it

W x H mm	Colour	Model	Pieces per roll	Item no.	
95 x 95	red	printed	500	5303-0012	N4
95 x 95	yellow	printed	500	5303-0014	N4
95 x 95	blue	printed	500	5303-0015	N4
95 x 95	green	printed	500	5303-0016	N4
95 x 95	black	printed	500	5303-0011	N4
95 x 95	white	unprinted	500	5303-0002	N4
150 x 150	red	printed	250	5303-1012	N4
150 x 150	yellow	printed	250	5303-1014	N4
150 x 150	blue	printed	250	5303-1015	N4
150 x 150	green	printed	250	5303-1016	N4
150 x 150	black	printed	250	5303-1011	N4
150 x 150	white	unprinted	250	5303-1002	N4

## Control seal close-it food & pharma

In response to numerous requests from our customers, we have developed close-it food & pharma, a control seal with an adhesive approved for use with foodstuffs. The strength of the adhesive is almost as powerful as that of the original, the close-it from Bürkle, proven millions of times. close-it food & pharma also reliably prevents products from leaking out after sampling.

The adhesive complies with the European guidelines for foodstuffs. Just like the original, close-it food & pharma has a barrier layer of aluminium foil. This means that close-it food & pharma is suitable for sampling foodstuffs, pharmaceuticals, cosmetics, food additives, even frozen goods – in short, for all applications in which cleanliness is particularly important.

- ▶ According to FDA Guidelines
- ▶ Particularly suited for the food and pharma industry



Control seal close-it food & pharma

W x H mm	Colour	Model	Pieces per roll	Item no.	
95 x 95	red	printed	500	5303-2017	N4
95 x 95	yellow	printed	500	5303-2020	N4
95 x 95	blue	printed	500	5303-2021	N4
95 x 95	green	printed	500	5303-2022	N4
95 x 95	black	printed	500	5303-2023	N4
95 x 95	white	unprinted	500	5303-2018	N4
150 x 150	red	printed	250	5303-3017	N4
150 x 150	yellow	printed	250	5303-3020	N4
150 x 150	blue	printed	250	5303-3021	N4
150 x 150	green	printed	250	5303-3022	N4
150 x 150	black	printed	250	5303-3023	N4
150 x 150	white	unprinted	250	5303-3018	N4

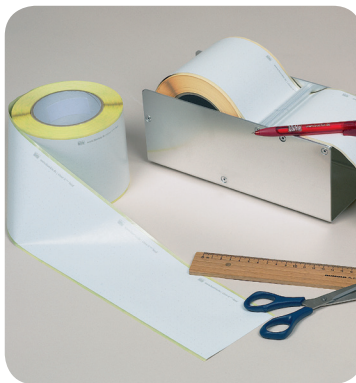
## close-it<sup>tape</sup>

Besides the individually detachable close-it and close-it food & pharma closure labels, our repeatedly tested and proven control seal is now also available on a continuous roller. This helps you discover whether you require only a small piece, for example for closing a small hole, or for marking a specific point. Or whether you want to repair a long crack or a large hole quickly, reliably and easily.

With its extremely strong adhesive strength, close-it<sup>tape</sup> holds on the most diverse bases, where the glue effect of normal adhesive tape quickly reaches its maximum capacity.

For universal use, we have kept the adhesive tape close-it<sup>tape</sup> in white with tear-off lines. It can be labelled with permanent ink and locks gas-proof. Available in the classic close-it version, as well as close-it<sup>tape</sup> food & pharma, with a food-compatible adhesive.

- ▶ Customizable
- ▶ Different designs
- ▶ For larger holes or longer tears in containers



close-it<sup>tape</sup>

Width mm	Model	Length m	Item no.	
95	standard	50	5303-0017	N4
150	standard	50	5303-1017	N4
95	food & pharma	50	5303-2019	N4
150	food & pharma	50	5303-3019	N4

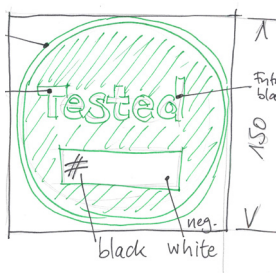
## close-it | with individual customer-specific special printing

### Your individual close-it

We would be happy to help you design your own close-it. Do you need final artwork for your draft? Or would you like to use our complete graphics service from draft stage through the print process? Our advertising department would be happy to consider any challenge: [info@buerkle.de](mailto:info@buerkle.de) | +49 (0) 76 35 8 27 95-0

### Custom-made according to the customer's specifications

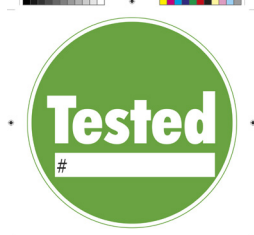
The close-it control seal has many satisfied users who use close-it as a control seal, for documentation or as an informative label.



Your idea



Our draft



Finishing and print



Your close-it label



### Shape and colour

Round, square, rectangular or other shape? Unusual contours can also be implemented! We would be pleased to provide you with a quote. Of course print is available in all colours, with either single or multiple colours.

### Finishing

close-it can be manufactured with or without carrier paper perforations. Different numbers of close-it labels can be supplied in a single roll.

## close-it dispenser

The close-it dispenser ensures safe storage and simple removal of the labels. The labels can be conveniently written on due to the marking plate.



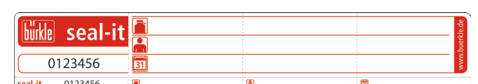
- ▶ For close-it standard size 95 x 95 mm or close-it Maxi 150 x 150 mm

### close-it dispenser

Model	Item no.
for labels with 95 x 95 mm	5303-9000 N4
for labels with 150 x 150 mm	5303-9100 N4

## seal-it security seal | for retention samples and tamper-proof packs

The seal-it self-adhesive label sticks to all conventional containers. Thanks to its unbelievable adhesive power it cannot be removed. If a container opening is closed with seal-it, then the container cannot be opened without destroying the seal-it label. seal-it is additionally provided with several cross-perforations which immediately tear when manipulated like a motorcar tax disc.



- ▶ Clear identification via numbers in sequence
- ▶ Integrated control label with the same number, for accompanying documents
- ▶ Format 178 mm long, 30 mm wide
- ▶ Tear-off perforation for each label

### seal-it security seal

Length mm	Width mm	Pieces per roll	Item no.
178	30	500	5399-0003 N4

## Tamper proof labels safe-it

The safety label safe-it is used as originality seal and as protection from manipulations of e.g. samples, retention samples, for transporting samples, sealing containers with important or dangerous chemicals in the lab as well as sealing letters, shipments and much more.

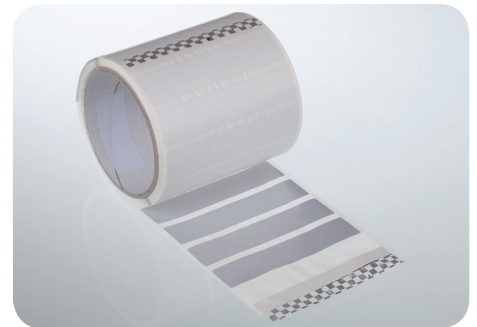
The initial opening of a package is made obvious and irrevocably visible with the seal guaranteeing originality, unauthorised opening can therefore be proven.

If the safety label is removed, it divides into separate layers. A pattern that was previously hidden appears on the surface and is irreversible. The glue leaves a residue on the surface that cannot be removed (a so-called void label). Once the label has been removed, it cannot be used again. Changing the label or modifying it afterwards are therefore not possible.



When the safe-it security seal has been broken, a silver checkerboard pattern appears on both the subsurface and surface of the sticker itself.

- ▶ With checkerboard pattern
- ▶ Visible proof of tampering



### Tamper proof labels safe-it

W x H mm	Pieces per roll	Item no.	
95 x 20	500	5303-5000	N4

## SampleSafe seal | secure your samples

The seals are made of stable polypropylene. The seals are to be uniquely identified with the serial 9-digit number.

The seal ring has a diameter of 2 mm, therefore SampleSafe seals also fit through small eyelets and slits. The seal tape is secured in the closure chamber by a metal insert made of stainless spring steel. The one-way tightening mechanism offers additional security against manipulation. It is not possible to forcibly open or manipulate the closure of the seal without leaving behind clear traces.

- ▶ Clear identification via numbers in sequence
- ▶ 100 seals (10 strips) per pack.
- ▶ Protection against manipulation by stainless steel safety spring.



### SampleSafe seal

Length mm	Dia. mm	Pieces per pack	Item no.	
260	2	100	5399-2902	N2

## Sealable wide-necked bottles

Sturdy bottle with sealing eyelets on the screw cap and the bottle. Particularly suited for sending samples. Seals provide increased sample authenticity. Easy to fill due to wide opening. Particularly suitable for viscous media, powder, granules and pastes.

- ▶ HDPE
- ▶ Leakproof
- ▶ Easy to fill due to wide-necked opening



### Sealable wide-necked bottles

Capacity ml	Container dia. mm	Neck dia. inside mm	Height with cap mm	Item no.	
250	64	26,5	118	0322-0250	N3
500	78	40	147	0322-0500	N3
1000	100	50	186	0322-1000	N3
2000	120	50	230	0322-2000	N3